

# **Porsche Cayman – Manual Centre Stainless Steel Sports Grille Kit**

## **Kit Contents: -**

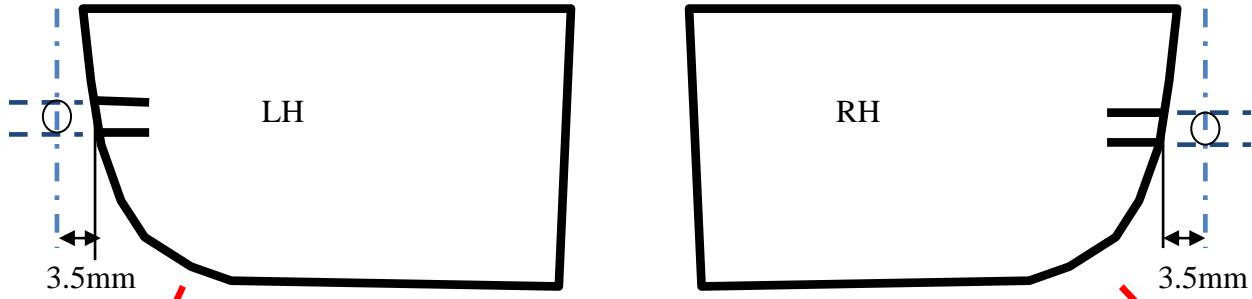
- 1. off Centre Grille
- 1. off LH Template
- 1. off RH Template



## **Centre Mesh Grille Fitting Instructions**

1. Fit masking tape around the apertures to protect the paintwork while fitting.
2. Using Templates mark out the side fixing pin position. Keep the template at the top edge of the black insert. The two marks are the outside limits of the hole. (See Sketch #1.)
3. To get the distance of the hole from the black moulding measure 3.5mm out from the black insert this is the centre of the hole.(See Sketch #1.)
4. Drill 3mm holes as marked.
5. Clean debris.
6. Place the LH fixing pin into the hole; flex the grille so that the RH fixing pin locates into its hole.
7. Remove the tape and the grilles are now complete.

#Sketch 1



# Porsche Cayman - Side Stainless Steel Sports Grille Kit

**Kit Contents: -**

- 1. off LH Side Grille
- 1. off RH Side Grille
- 2. off Screws

**Side Mesh Grille Fitting Instructions**

1. Clean out the debris from the inside of the air intake.
2. Fit masking tape around the apertures to protect the paintwork while fitting.
3. Offer the LH/RH mesh grilles to the aperture
4. Hook the outer clip inside the aperture.
5. Push the grilles into position and hook the inner clip into the aperture.
6. Fix into position using the screw provided through the top centre fixing washer.
7. Check all of the brackets have engaged fully. (If any of the brackets are not clipped behind the plastic push them down with a long screwdriver while putting a little pressure on the front face of the grille)
8. Remove the tape and the grilles are now complete.



